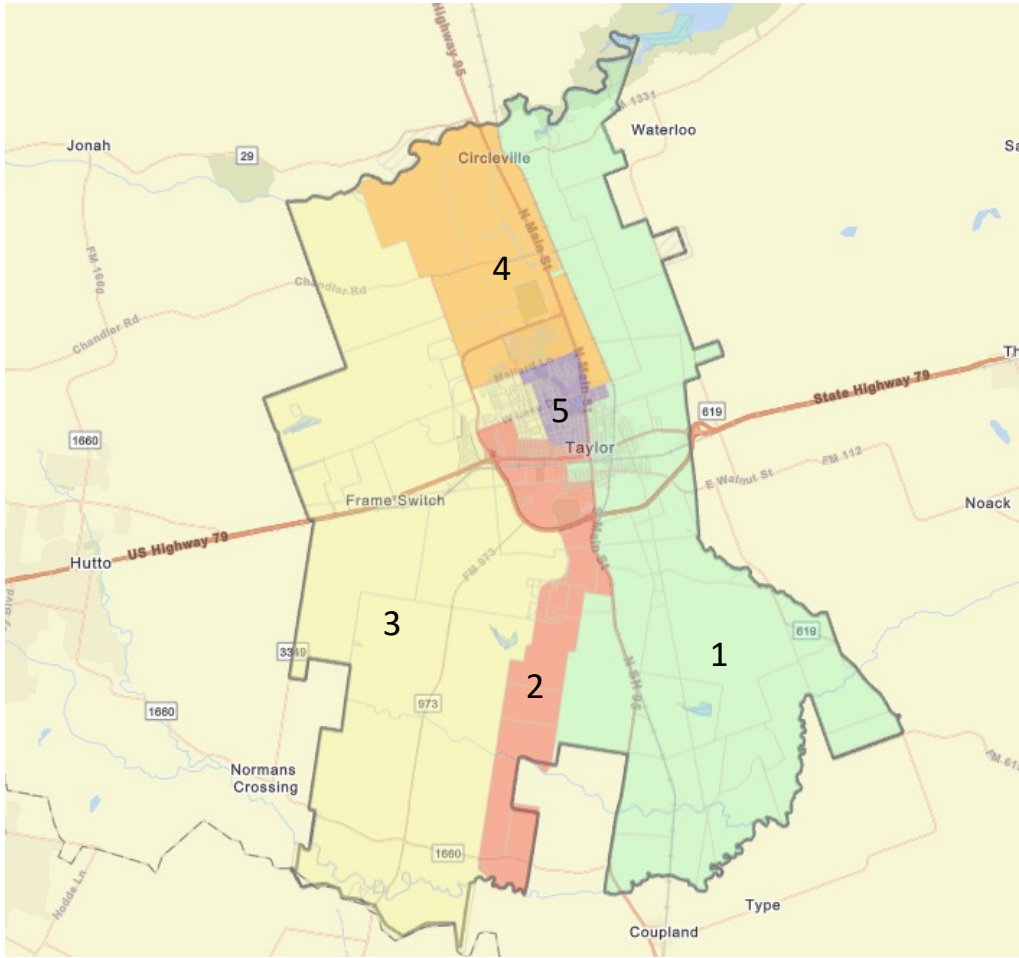


Taylor Independent School District
Current Board of Trustee Single Member Districts (2010 Census Blocks)



Taylor Independent School District
Board of Trustee 2010 Analysis

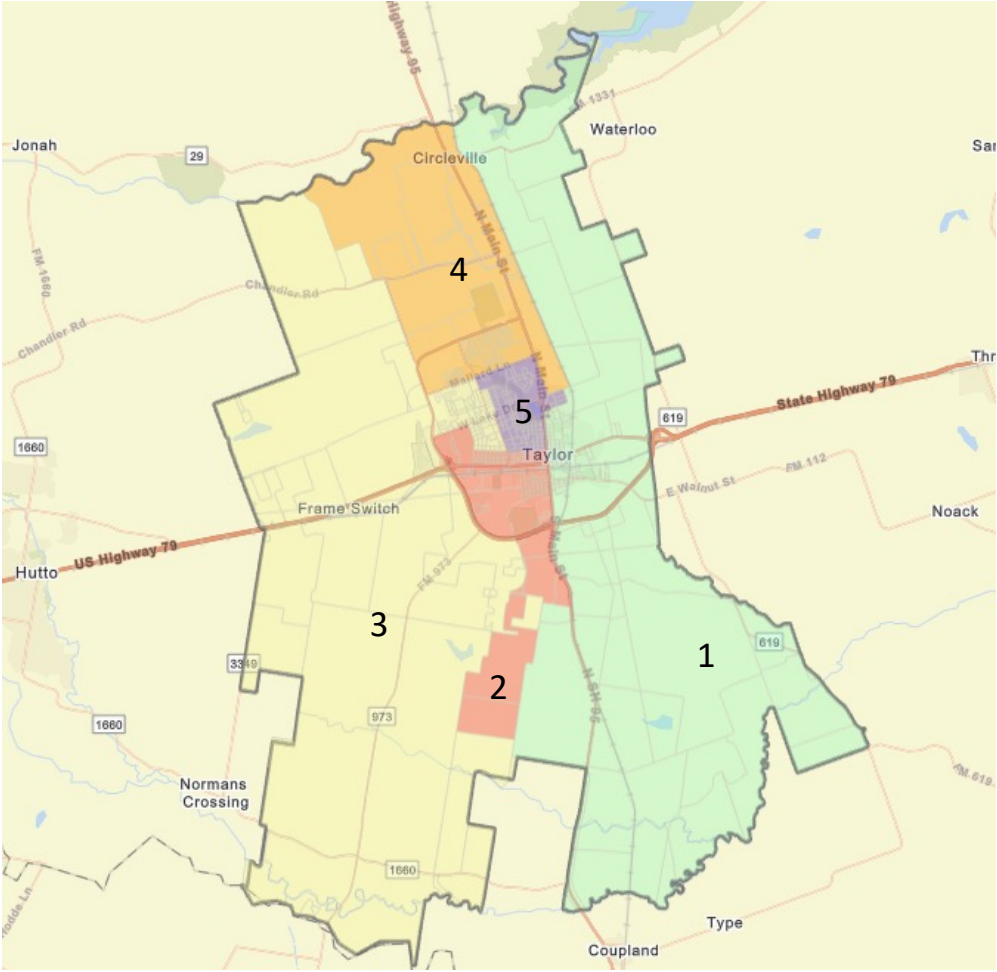
Trustee District	TOTAL POPULATION						TOTAL POPULATION PERCENTAGES					
	Anglo	Asian	Black	Hispanic	Other	Total	Anglo	Asian	Black	Hispanic	Other	Total
1	806	15	567	1,783	73	3,244	24.8%	0.5%	17.5%	55.0%	2.3%	100.0%
2	1,039	23	303	1,966	42	3,373	30.8%	0.7%	9.0%	58.3%	1.2%	100.0%
3	2,283	9	142	798	68	3,300	69.2%	0.3%	4.3%	24.2%	2.1%	100.0%
4	1,878	19	256	925	45	3,123	60.1%	0.6%	8.2%	29.6%	1.4%	100.0%
5	1,853	33	187	1,242	48	3,363	55.1%	1.0%	5.6%	36.9%	1.4%	100.0%
TOTALS	7,859	99	1,455	6,714	276	16,403	47.9%	0.6%	8.9%	40.9%	1.7%	100.0%
		5 DIST AVG		3,281	8.0% Percent Differential *							

Trustee District	VOTING AGE POPULATION (VAP) PERCENTAGES					
	Anglo	Asian	Black	Hispanic	Other	Total
1	29.7%	0.4%	20.1%	47.9%	1.9%	100.0%
2	34.3%	0.8%	8.4%	55.6%	1.0%	100.0%
3	75.1%	0.3%	3.6%	19.7%	1.3%	100.0%
4	66.6%	0.8%	7.7%	24.0%	1.0%	100.0%
5	60.9%	1.0%	4.9%	32.0%	1.2%	100.0%
TOTALS	53.5%	0.7%	8.8%	35.8%	1.3%	100.0%

VAP: Voting Age Population

SOURCE: Total Population and Voting Age Population summarized from 2010 & 2020 Census PL 94-171 Redistricting Data at the block level.

Taylor Independent School District
Current Board of Trustee Single Member Districts (2020 Census Blocks)



Taylor Independent School District Board of Trustee 2020 Analysis

2020 CENSUS TOTALS - Current													
Trustee District	TOTAL POPULATION						TOTAL POPULATION PERCENTAGES						
	Anglo	Asian	Black	Hispanic	Other	Total	Anglo	Asian	Black	Hispanic	Other	Total	
1	970	14	371	1,507	81	2,943	33.0%	0.5%	12.6%	51.2%	2.8%	100.0%	
2	835	45	377	1,660	106	3,023	27.6%	1.5%	12.5%	54.9%	3.5%	100.0%	
3	2,345	23	148	1,307	189	4,012	58.4%	0.6%	3.7%	32.6%	4.7%	100.0%	
4	2,102	25	347	1,393	176	4,043	52.0%	0.6%	8.6%	34.5%	4.4%	100.0%	
5	1,780	13	266	1,316	125	3,500	50.9%	0.4%	7.6%	37.6%	3.6%	100.0%	
TOTALS	8,032	120	1,509	7,183	677	17,521	45.8%	0.7%	8.6%	41.0%	3.9%	100.0%	
			5 DIST AVG	3,504	37.4% Percent Differential *								

Trustee District	VOTING AGE POPULATION (VAP) PERCENTAGES					
	Anglo	Asian	Black	Hispanic	Other	Total
1	36.4%	0.2%	14.2%	47.0%	2.2%	100.0%
2	30.1%	1.7%	12.7%	52.5%	2.9%	100.0%
3	64.7%	0.5%	3.0%	27.9%	3.9%	100.0%
4	56.9%	0.8%	8.6%	30.2%	3.4%	100.0%
5	54.7%	0.4%	7.1%	34.3%	3.6%	100.0%
TOTALS	50.3%	0.7%	8.6%	37.1%	3.3%	100.0%

VAP: Voting Age Population

SOURCE: Total Population and Voting Age Population summarized from 2010 & 2020 Census PL 94-171 Redistricting Data at the block level.

Taylor Independent School District Board of Trustee 2010 TO 2020 Change Analysis

2010 to 2020 CHANGE IN DEMOGRAPHICS

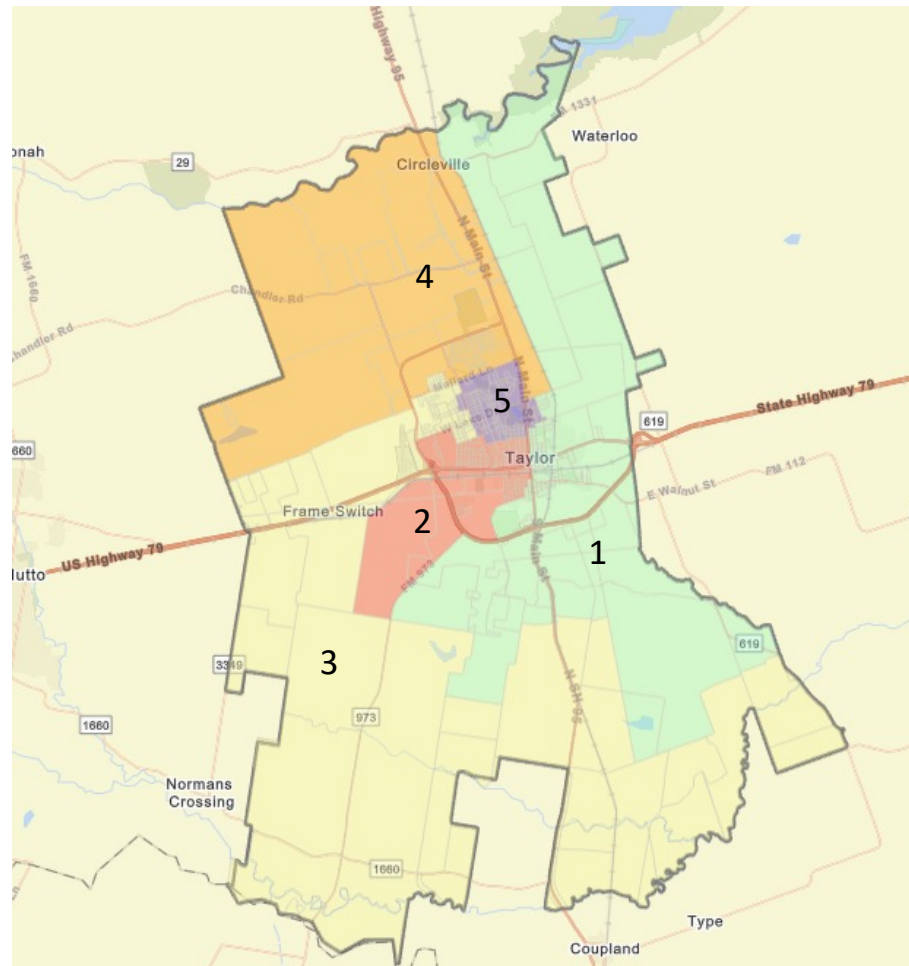
Trustee District	TOTAL POPULATION						TOTAL POPULATION PERCENTAGES					
	Anglo	Asian	Black	Hispanic	Other	Total	Anglo	Asian	Black	Hispanic	Other	Total
1	164	-1	-196	-276	8	-301	8.1%	0.0%	-4.9%	-3.8%	0.5%	0.0%
2	-204	22	74	-306	64	-350	-3.2%	0.8%	3.5%	-3.4%	2.3%	0.0%
3	62	14	6	509	121	712	-10.7%	0.3%	-0.6%	8.4%	2.7%	0.0%
4	224	6	91	468	131	920	-8.1%	0.0%	0.4%	4.8%	2.9%	0.0%
5	-73	-20	79	74	77	137	-4.2%	-0.6%	2.0%	0.7%	2.1%	0.0%
TOTALS	173	21	54	469	401	1,118	-2.1%	0.1%	-0.3%	0.1%	2.2%	0.0%

Trustee District	2010 TO 2020 Change In VAP PERCENTAGES					
	Anglo	Asian	Black	Hispanic	Other	Total
1	6.7%	-0.2%	-5.8%	-1.0%	0.3%	n/a
2	-4.1%	1.0%	4.3%	-3.1%	2.0%	n/a
3	-10.4%	0.2%	-0.7%	8.3%	2.6%	n/a
4	-9.6%	0.0%	0.9%	6.2%	2.5%	n/a
5	-6.2%	-0.6%	2.2%	2.3%	2.4%	n/a
TOTALS	-3.2%	0.1%	-0.1%	1.3%	2.0%	N/A

VAP: Voting Age Population

SOURCE: Total Population and Voting Age Population summarized from 2010 & 2020 Census PL 94-171 Redistricting Data at the block level.

Taylor Independent School District Redistricting Proposal



Taylor Independent School District Option 1 Analysis

2020 CENSUS TOTALS - PLAN 1												
Trustee District	TOTAL POPULATION						TOTAL POPULATION PERCENTAGES					
	Anglo	Asian	Black	Hispanic	Other	Total	Anglo	Asian	Black	Hispanic	Other	Total
1	1,124	12	416	1,716	85	3,353	33.5%	0.4%	12.4%	51.2%	2.5%	100.0%
2	1,094	53	391	1,883	131	3,552	30.8%	1.5%	11.0%	53.0%	3.7%	100.0%
3	2,040	18	142	1,196	169	3,565	57.2%	0.5%	4.0%	33.5%	4.7%	100.0%
4	1,936	22	325	1,178	154	3,615	53.6%	0.6%	9.0%	32.6%	4.3%	100.0%
5	1,838	15	235	1,210	138	3,436	53.5%	0.4%	6.8%	35.2%	4.0%	100.0%
TOTALS	8,032	120	1,509	7,183	677	17,521	45.8%	0.7%	8.6%	41.0%	3.9%	100.0%
			5 DIST AVG	3,504		7.81% Percent Differential *						

Trustee District	VOTING AGE POPULATION (VAP) PERCENTAGES					
	Anglo	Asian	Black	Hispanic	Other	Total
1	37.0%	0.2%	13.7%	47.2%	1.9%	100.0%
2	34.3%	1.7%	11.1%	50.0%	2.9%	100.0%
3	62.4%	0.4%	3.5%	29.4%	4.3%	100.0%
4	59.0%	0.8%	9.0%	27.9%	3.3%	100.0%
5	57.6%	0.4%	6.3%	31.9%	3.8%	100.0%
TOTALS	50.3%	0.7%	8.6%	37.1%	3.3%	100.0%

VAP: Voting Age Population

SOURCE: Total Population and Voting Age Population summarized from 2010 & 2020 Census PL 94-171 Redistricting Data at the block level.